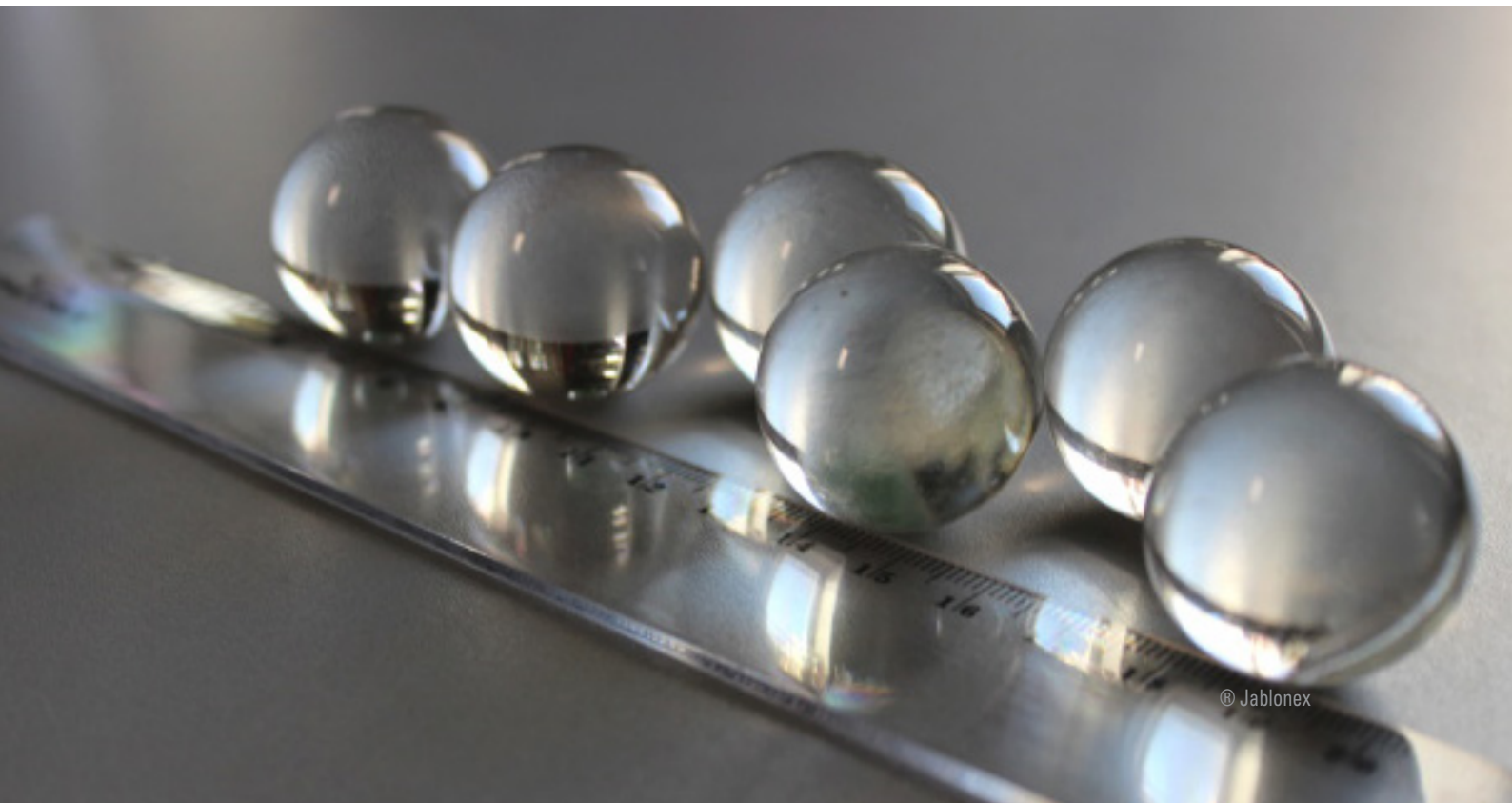




GLASS COMPONENTS

TECHNICAL BEADS

- Description
- Types
- Applications



© Jablonex



We offer a big range of Technical Glass Beads in different diameters, starting from 0,001mm. They are used for technical purposes due to their specific physical properties and their high quality composition of glass. They are neutral and hygienic. Their perfection makes them suitable for decorative purposes as well.

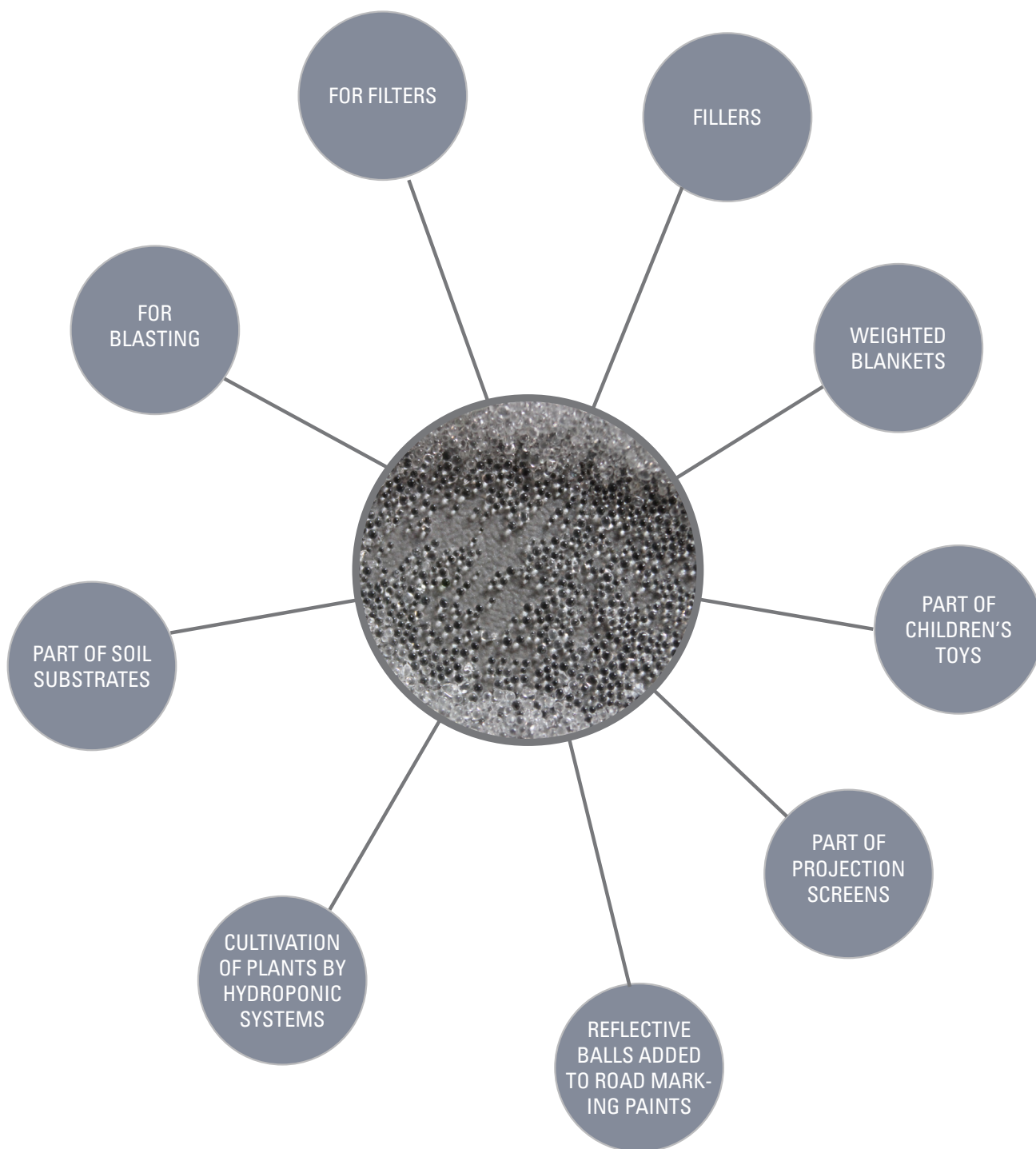
We have 3 main types of technical glass beads based on their size and applications.

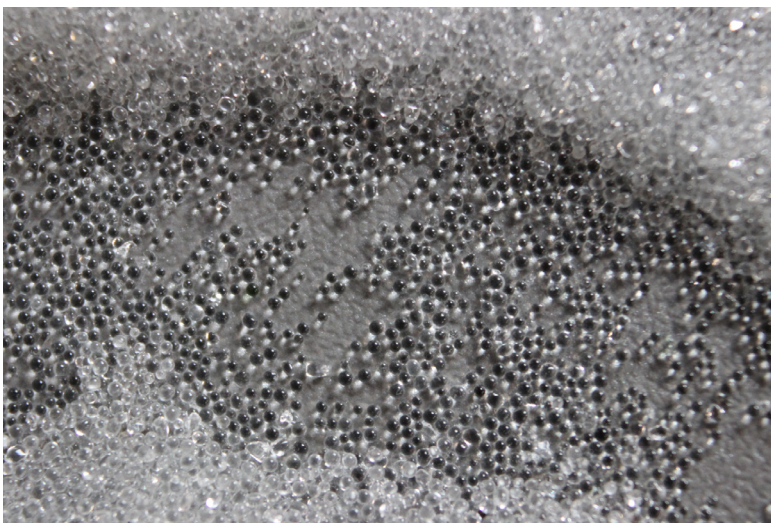
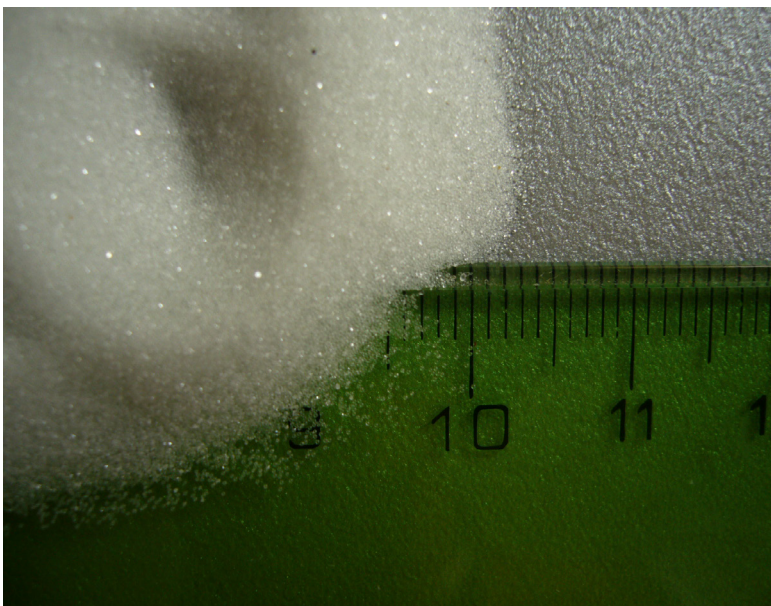


Glass Microspheres

These are the smallest of the technical family.
The sizes go from **0.001mm to 0.7mm**

Most common applications are:

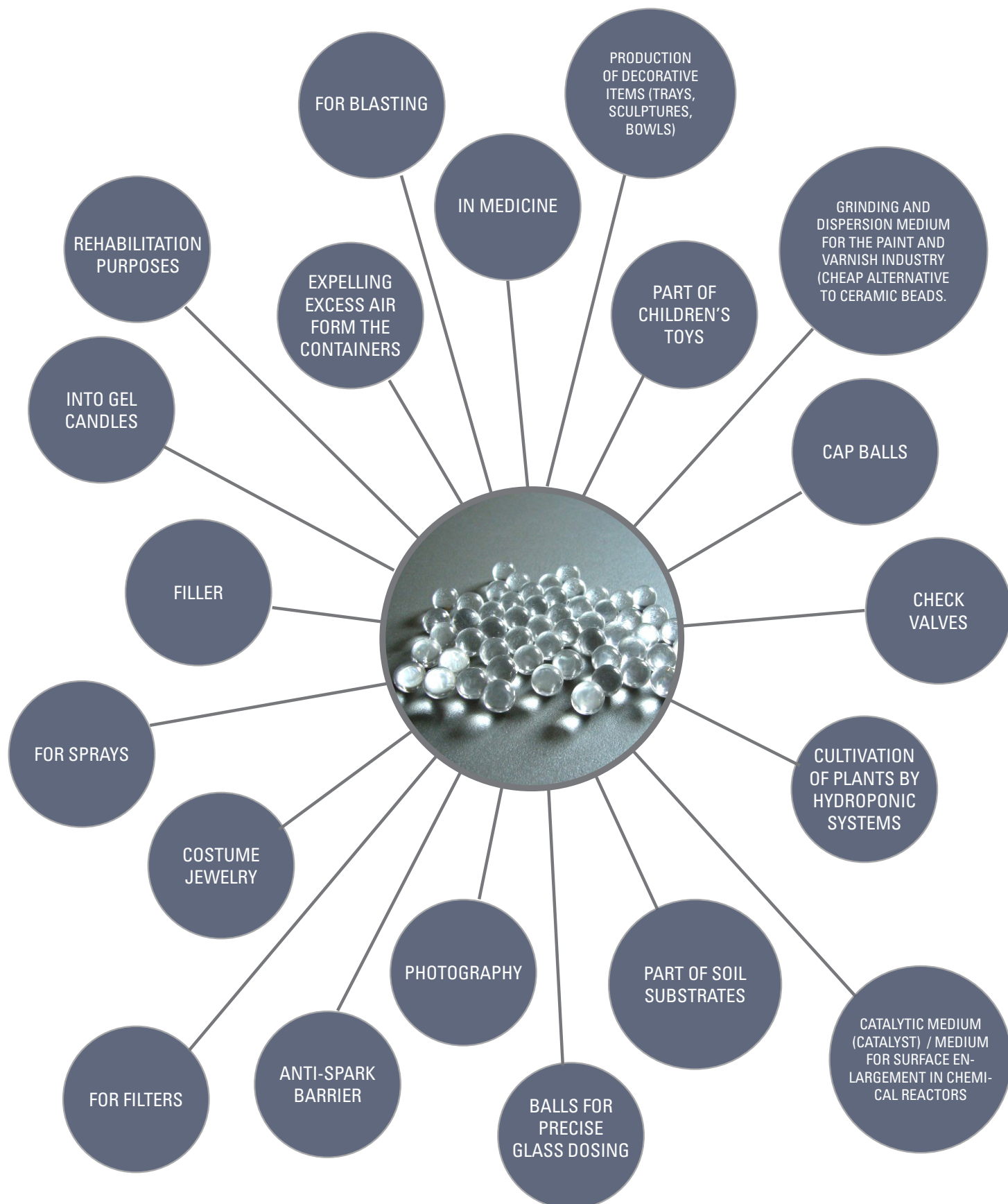


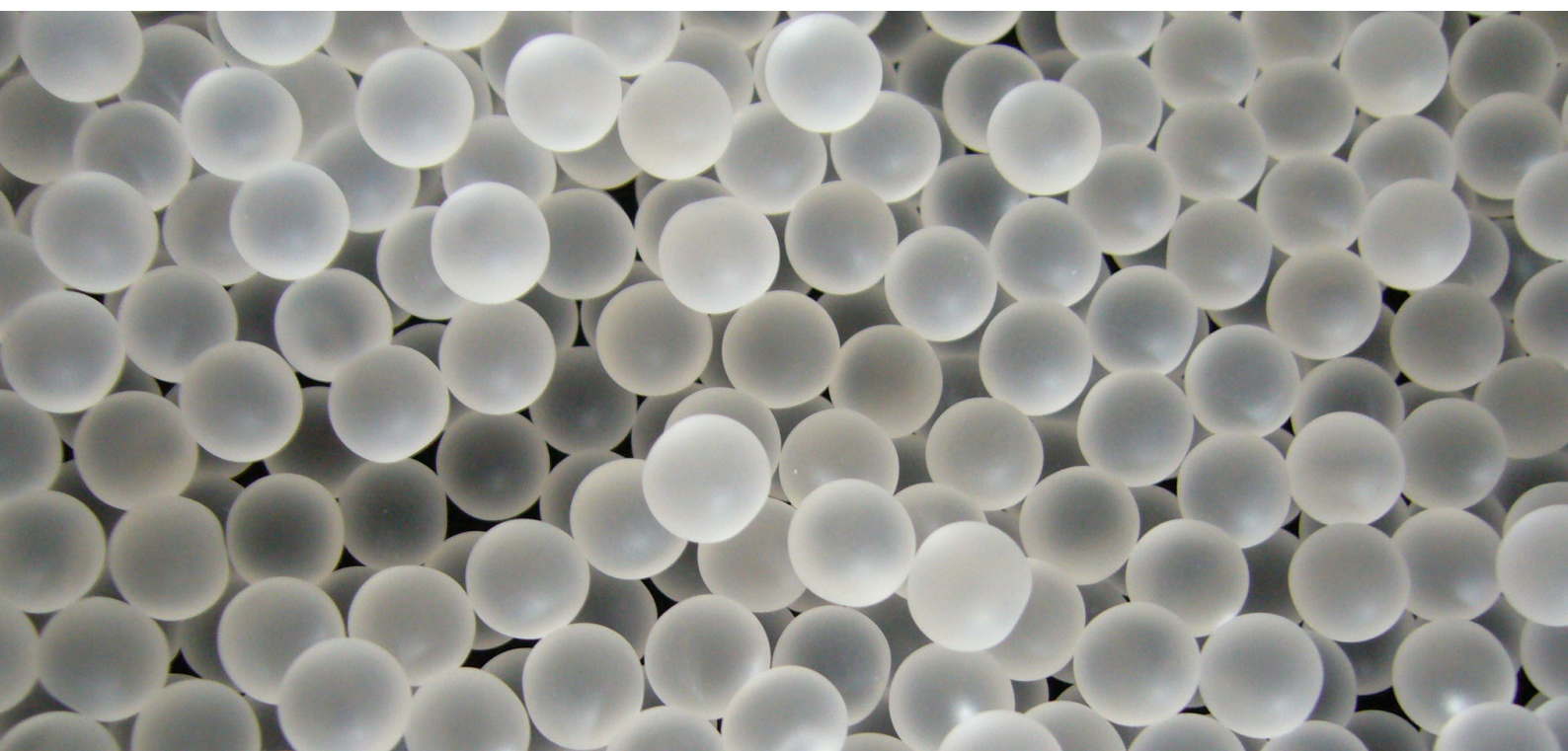
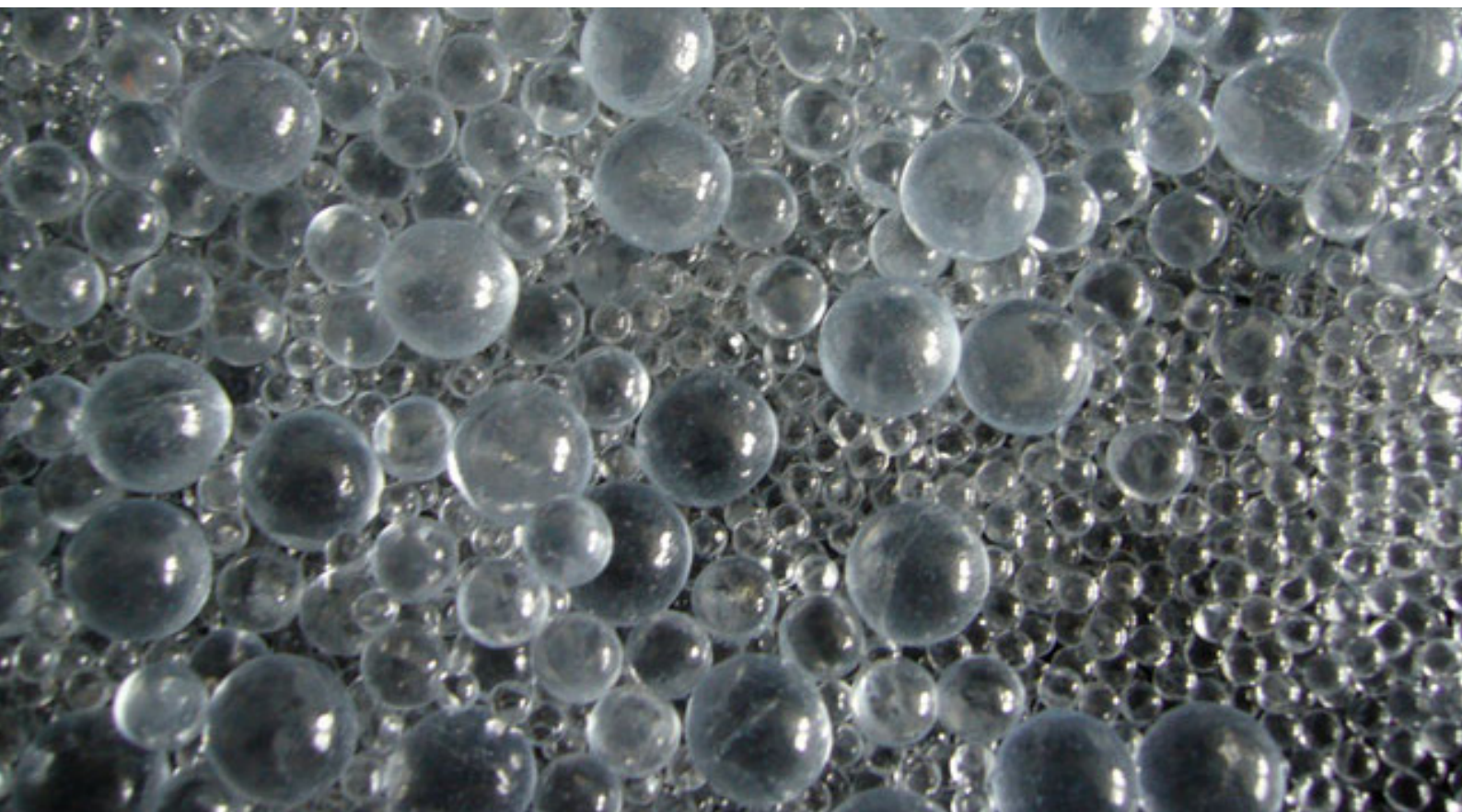




These beads have the widest range of applications of our catalogue.
The sizes go from **0.6mm to 10mm**

Most common applications are:



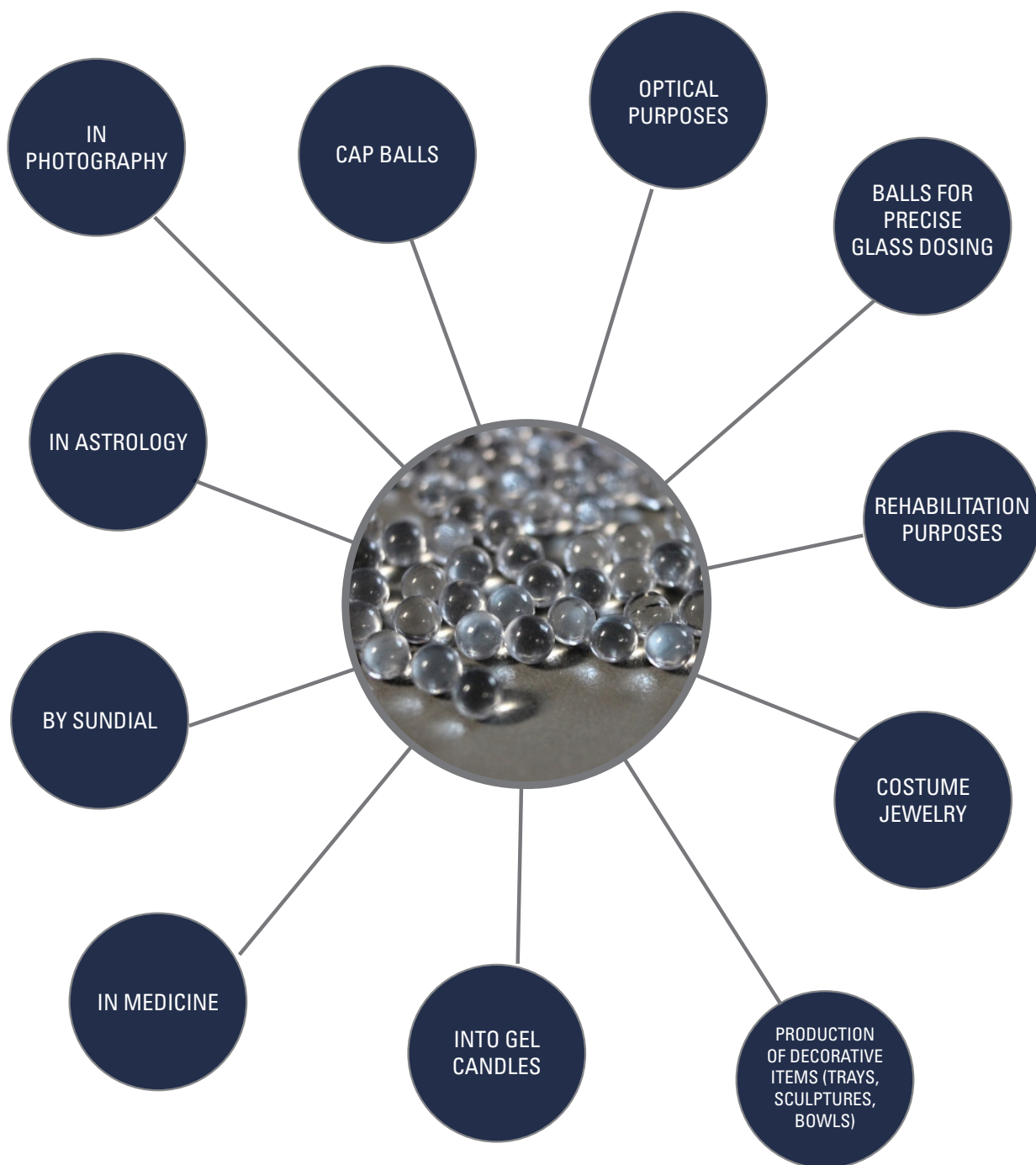




Glass beads (no hole)

These beads are the biggest of our catalogue.
The sizes **>10 mm**

Most common applications are:





HEADQUARTERS

Příčná 350
Železný Brod 46822
Czech Republic
+420 602 106 526

www.jablonex.com
contact@jablonex.com